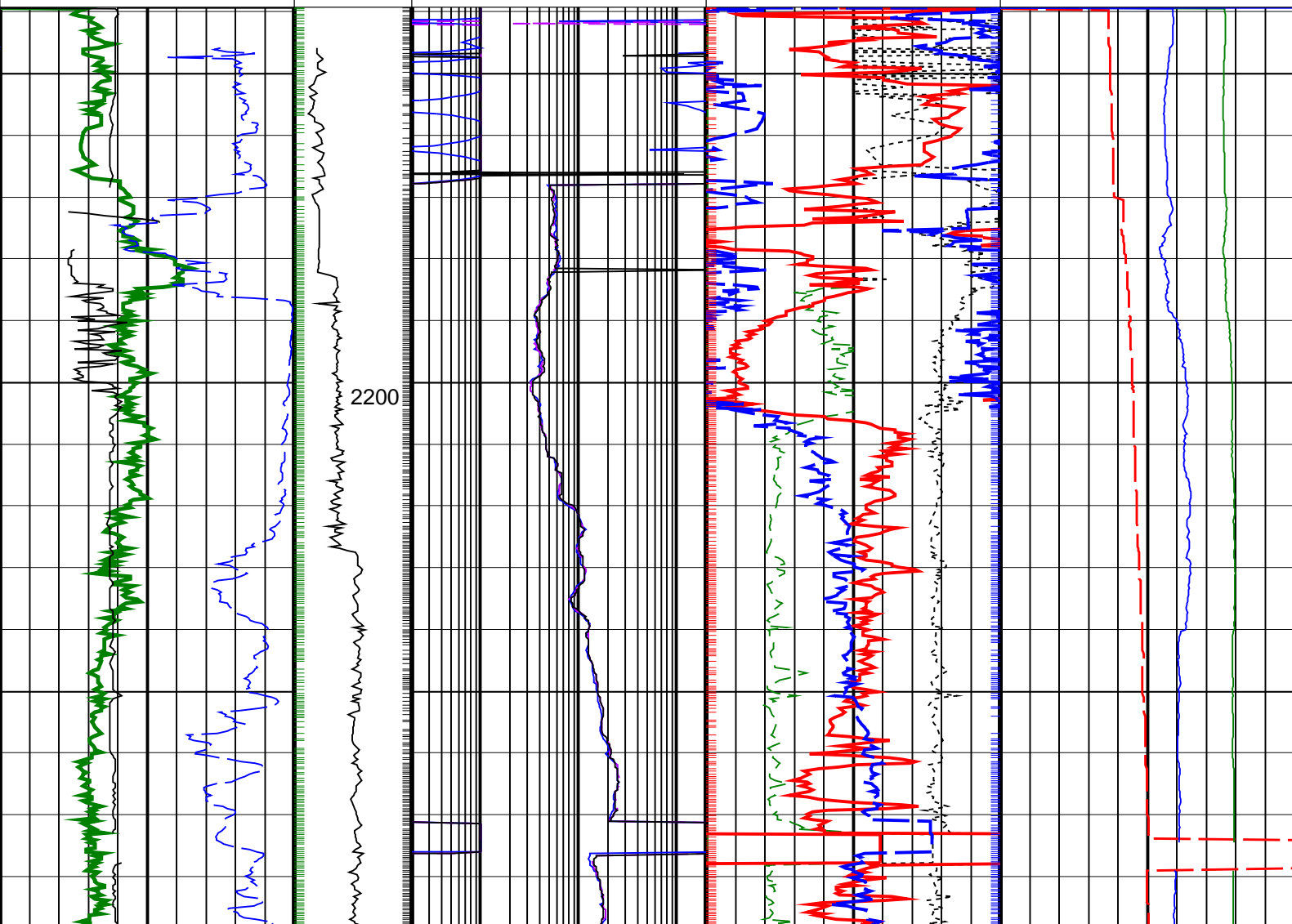
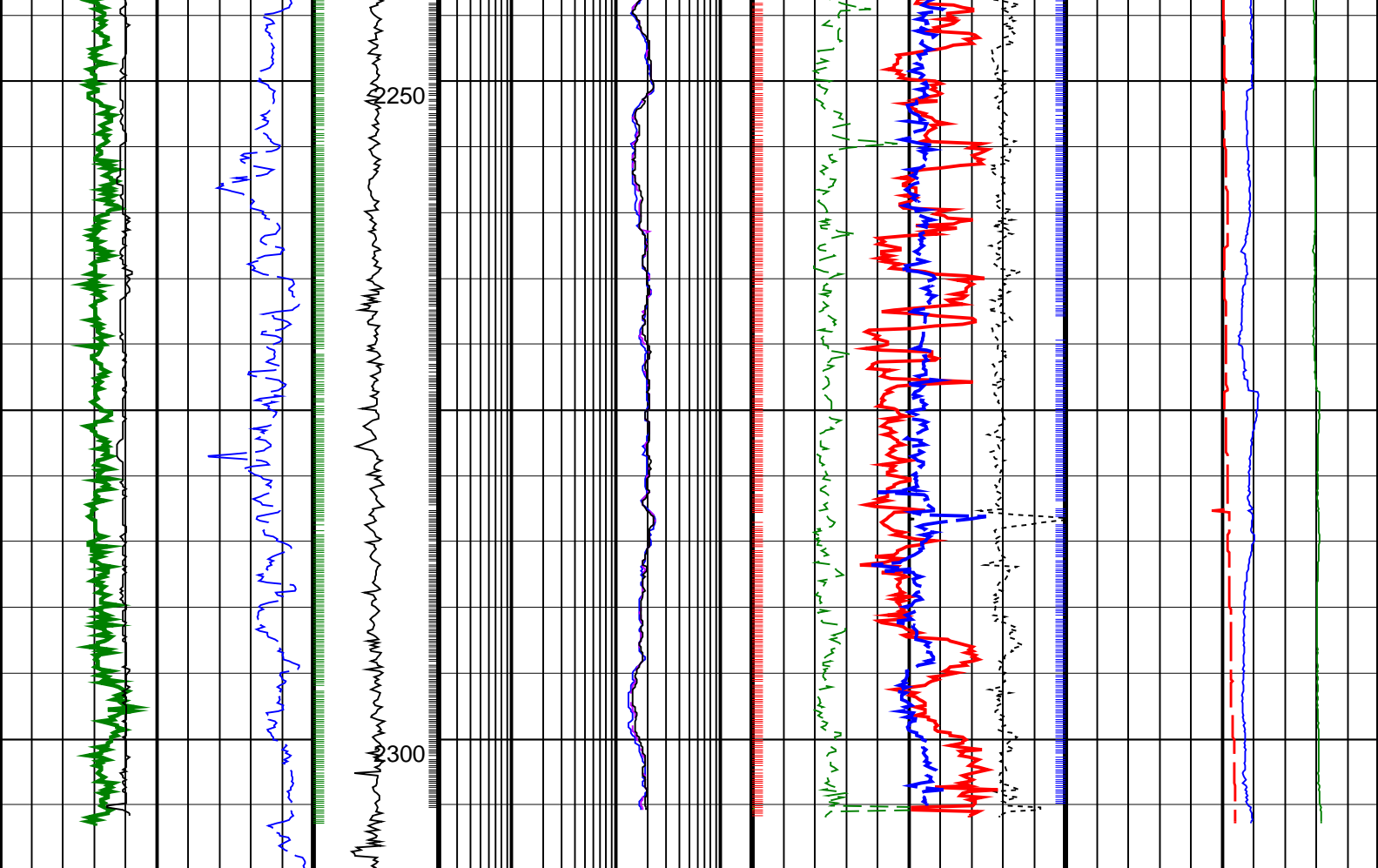


PIP SUMMARY

Density Samples +  
 Gamma Ray Samples +  
 Resistivity Samples +  
 Neutron Samples +

Gamma Ray, Average, Real-Time, Computed Downhole (GRMA_DH_ECO_RT) (GAPI)	ARC Phase Shift Resistivity 40 inch at 2 MHz, Real-Time (P40H_ECO_RT) (OHMM)	Thermal Neutron Porosity, Average, Real-Time (TNPH_ECO_RT) (PU)	Equivalent Circulating Density, Real-Time (ECD_ECO_RT) (LB/G)
0 200	0.2 200	45 -15	10 15
Ultrasonic Caliper, Average Diameter, Real-Time, Computed Downhole (UCAV_DH_ECO_RT) (IN)	ARC Phase Shift Resistivity 28 inch at 2 MHz, Real-Time (P28H_ECO_RT) (OHMM)	Photoelectric Factor, Bottom, Real-Time, Computed Downhole (PEB_DH_ECO_RT) (G/C3)	Bulk Density Correction, Bottom, Real-Time Computed Downhole (DRHB_DH_ECO_RT) (G/C3)
6 16	0.2 200	0 10 -0.25 0.25	Downhole Annulus Pressure, Real Time, Computed Downhole (DHAP_DH_ECO_RT) (PSI)
ROP*5 (ROP5) (M/HR)	MWD Collar RPM (CRPM_RT) (RPM)	ARC Phase Shift Resistivity 16 inch at 2 MHz, Real-Time (P16H_ECO_RT) (OHMM)	Bulk Density, Bottom, Real-Time, Computed Downhole (ROBB_DH_ECO_RT) (G/C3)
200 0	0 400	0.2 200	Downhole Annulus Temperature, Real Time, Computed Downhole (DHAT_DH_ECO_RT) (DEGC)
		1.85 2.85	0 200





<p>ROP*5 (ROP5) (M/HR)</p> <p>200 0</p>	<p>MWD Collar RPM (CRPM_RT) (RPM)</p> <p>0 400</p>	<p>ARC Phase Shift Resistivity 16 inch at 2 MHz, Real-Time (P16H_ECO_RT)</p> <p>0.2 (OHMM) 200</p>	<p>Bulk Density, Bottom, Real-Time, Computed Downhole (ROBB_DH_ECO_RT)</p> <p>1.85 (G/C3) 2.85</p>	<p>Downhole Annulus Temperature, Real Time, Computed Downhole (DHAT_DH_ECO_RT)</p> <p>0 (DEGC) 200</p>
<p>Ultrasonic Caliper, Average Diameter, Real-Time, Computed Downhole (UCAV_DH_ECO_RT)</p> <p>6 (IN) 16</p>		<p>ARC Phase Shift Resistivity 28 inch at 2 MHz, Real-Time (P28H_ECO_RT)</p> <p>0.2 (OHMM) 200</p>	<p>Photoelectric Factor, Bottom, Real-Time, Computed Downhole (PEB_DH_ECO_RT)</p> <p>0 (----) 10</p>	<p>Bulk Density Correction, Bottom, Real-Time Computed Downhole (DRHB_DH_ECO_RT)</p> <p>-0.25 (G/C3) 0.25</p>
<p>Gamma Ray, Average, Real-Time, Computed Downhole (GRMA_DH_ECO_RT)</p> <p>0 (GAPI) 200</p>		<p>ARC Phase Shift Resistivity 40 inch at 2 MHz, Real-Time (P40H_ECO_RT)</p> <p>0.2 (OHMM) 200</p>	<p>Thermal Neutron Porosity, Average, Real-Time (TNPH_ECO_RT)</p> <p>45 (PU) -15</p>	<p>Downhole Annulus Pressure, Real Time, Computed Downhole (DHAP_DH_ECO_RT)</p> <p>0 (PSI) 6000</p>
			<p>Equivalent Circulating Density, Real-Time (ECD_ECO_RT)</p> <p>10 (LB/G) 15</p>	

PIP SUMMARY

Density Samples +

+ Gamma Ray Samples

+ Resistivity Samples

Neutron Samples +

IDEAL Version: ID11\_0C\_01

IDEAL